



TOWN CENTRE PALETTE GUIDE

NARELLAN TOWN CENTRE

17th July 2013
Issue: H

PREPARED FOR: D Vitocco Constructions PtyLtd + Greenfields Narellan Holdings Pty Ltd t/a Narellan Town Centre.
ATTENTION: Rhys Brotherton

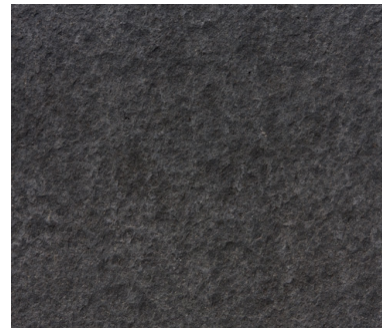
distinctive landscape planning
Landscape & Interior Designers, Planners & Consultants
ACN: 109 511 631 ABN: 711 095 11 631



NARELLAN TOWN CENTRE - CIVIC SQUARE, HERITAGE SQUARE + STREETSCAPE

HARDSCAPE PALETTE GUIDE

PAVING



MAIN PAVEMENT 01

BLUESTONE PAVING
Basalto Bluestone Paver
600x400x20mm
Exfoliated Finish
Cinijus supplier \$58/m2
Used to feature corners and plaza space.



MAIN PAVEMENT 02

OXIDE CONCRETE
CCS 'Black 21'
Broom finish



MAIN PAVEMENT 03

PLAIN CONCRETE
Broom finish
To streetscape areas as shown on plan



ACCENT PAVEMENT 01

EXPOSED AGGREGATE CONCRETE - HONED FINISH
Robust style of pavement subtle contrast to main pavement.
Used in cafe/food seating areas.



ACCENT PAVEMENT 02

ARTIFICIAL TURF
To plaza area surrounding Narellan Grove.
Supplier: Tigerturf

PAVING + BANDING



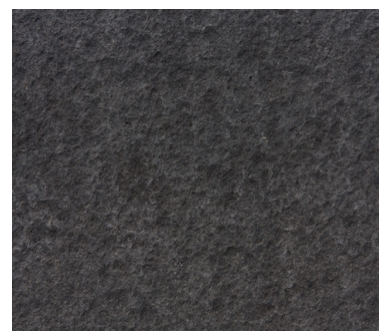
ACCENT PAVEMENT 03

COBBLESTONE
Contrasting Jet Black Bassalt and Casper white Cobble
Supplier: Cinijus
Used to Shared zone of Heritage square to denote area of vehicular and pedestrian movement. Keeps with existing colour scheme of plaza with different texture



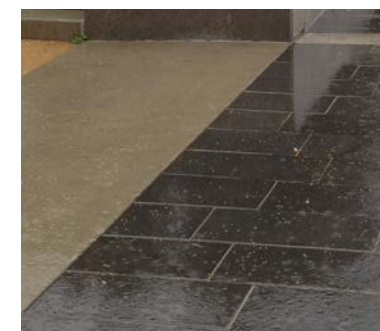
PAVEMENT BANDING 01

CONTRASTING PAVER BANDING.
Granite paver Casper White
600x400x20mm
Cinijus supplier \$36/m2
Premium pavement banding to formal areas of pavement. used to define streetscape and formal avenues from plazas and key corners.



PAVEMENT BANDING 03

CONTRASTING PAVER BANDING.
Basalto Bluestone Paver
600x400x20mm
Exfoliated Finish
Cinijus supplier \$58/m2
Pavement banding to concrete footpath



PAVEMENT BANDING 02

PLAIN CONCRETE BAND
Change in material for diagonal pavement banding. Plain concrete creates a clean look and contrast when banded through Bluestone pavement.
used to define plazas and key corners from streetscape and formal avenues.

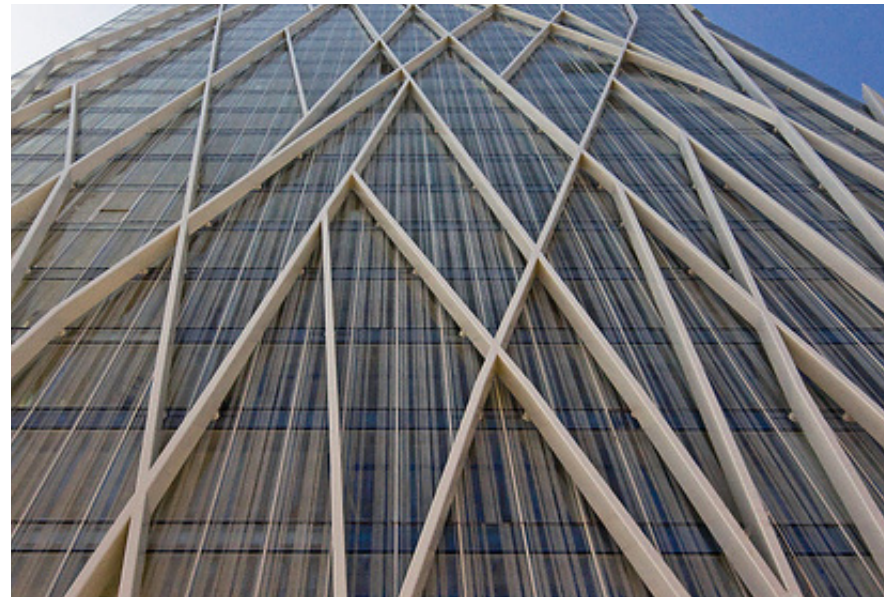


PAVEMENT BANDING 04

RECYCLED GLASS PAVING
Bold, NTC brand image colours. Vibrant pavement style brings together elements through the ground plane.
3mm Sky Blue- Supplier: StoneSet.
\$120/m2 approximate costing.

NARELLAN TOWN CENTRE - CIVIC SQUARE, HERITAGE SQUARE + STREETSCAPE HARDSCAPE PALETTE GUIDE

BANDING + WALLING



INDICATIVE IMAGERY

INSERTS DISSECTING GROUND PLANE.

Patterning of the ground plane to compliment the large glass panels with aluminium frames to the facade of the building.



MAIN WALLING

FORMED CONCRETE

Allows for implied seating. creates clean lines through edges within public realm



ACCENT WALLING

SANDSTONE CLADDING

To feature walls of heritage square to reference Burton Arms and Narellan History.

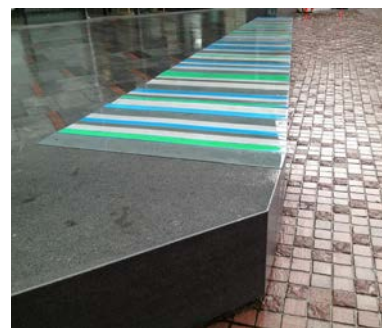


RMS FENCING

PEDESTRIAN BARRIER

Ingal Civil pedestrian fence. Hot dipped galvanised, powdercoated black.

FURNITURE



BENCH SEATING 01

FORMED CONCRETE +STONE.

Customised benches to create colour and interest in furniture. Benches can take various shape and form to suite the patterning of the exterior ground plane and pedestrian movement.



BENCH SEATING 02

CUSTOM BENCH

Formed concrete and Composite benches create a unique contrast in height and material to a standard bench. Unique lighting opportunities.



BENCH SEATING 03

CUSTOM BENCH

Formed concrete and composite timber benches: addition to formed concrete walling



MOVABLE FURNITURE

OUTDOOR SEATING

to plaza area, seating is movable by machine to create different social situations.



INDICATIVE IMAGERY

VARIOUS SEATING FORMS

Garden edges, informal pod seating and implied tiered seating.

NARELLAN TOWN CENTRE - CIVIC SQUARE, HERITAGE SQUARE + STREETSCAPE HARDSCAPE PALETTE GUIDE

FURNITURE



CONCRETE SPHERES

PRE-CAST CONCRETE.
Where planter troughs are a concern for maintainence, simple solid objects can provide the same space defining qualities in a simple elegant form.



RUBBISH BIN

URBAN BIN
Aluminium black powdercoat finish.
Simple classic design without attracting too much attention.
Supplier: Botton + Gardiner



RECYCLING OPTION

COLOUR CODED RECYCLING BINS
Botton + Gardiner
Aluminium black powdercoat finish. Use of development branding colours for continuity.
Supplier: Botton + Gardiner



DRINKING FOUNTAIN

PROSPECT DRINKING FOUNTAIN
Stainless steel
wheelchair accessible + dog drinking bowl.
Supplier: Botton + Gardiner



BOLLARD

BOLLARD
Evershine BL-03-H
Matte finish.
Compliments architectural vertical battens.
Supplier: Evershine Stainless Steel

FURNITURE



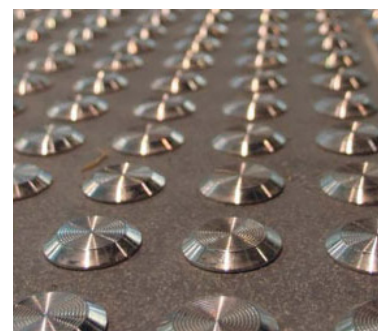
BICYCLE RACK

INDIVIDUAL BIKE RACK
CBR2b
Clean and simple system.
repetition of the product turns into a sculptural feature.
Supplier: Cora Bike Rack



TREE GRATE

CUSTOM TREE GRATE
Steel Inlay with concrete. Tree grate becomes sculptural feature designed to fit with pattern created on the ground plane. Materials compliment entire palette.
Supplier: Commercial Systems



TGSI

TACTILE GROUND SURFACE INDICATORS
Solid 316 Marine Grade
Stainless steel



BUS SHELTER

CUSTOM BUS SHELTER
Combination of concrete, powdercoated steel, glass and timber to compliment palette.
Upright elements create a unique structure complimenting architecture



ARBOUR STRUCTURE

CUSTOM ARBOUR
Architectural form creates unique, practical seating areas
verticality and height will compliment scale of built form.

NARELLAN TOWN CENTRE - CIVIC SQUARE, HERITAGE SQUARE + STREETScape HARDSCAPE PALETTE GUIDE

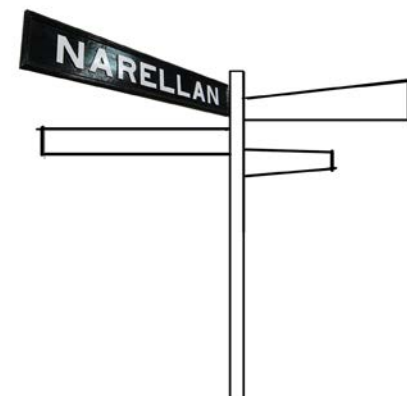
SIGNAGE



SITE IDENTIFYING

"NARELLAN TOWN CENTRE"

Low wall signage.
made from pre cast concrete walling with anti graffiti coating. This gives it a raw look with high contrast for surrounding green foliage and lighting. Town Centre site identifying signage will be simple, elegant and interactive. Lettering to be built into construction of signage. Stainless steel trellis to rear of signage to create green wall.



DIRECTIONAL

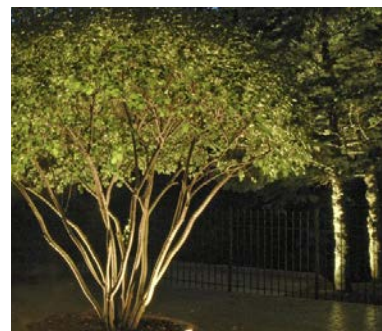
HISTORICAL STYLE
Style of signage can evoke memory of place.
An imaginative approach to this style will display the convergence between old and new, a concept displayed throughout the development.



SUBLIMINAL

WORDING INLAYS
Wording into the ground plane can give direction.
will form part of the public art concept while making up some of the banding areas for the public domain areas.

LIGHTING



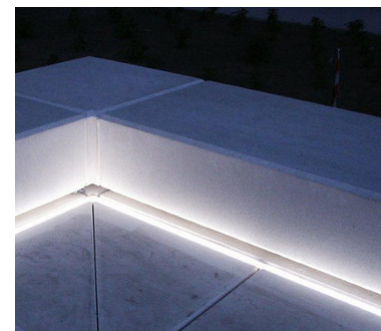
EFFECT LIGHTING

LIGHTING DESIGN
Tree with up lighting



EFFECT LIGHTING

LIGHTING DESIGN
Urban elements highlighted through smart lighting design without the need to see any fixtures.



EFFECT LIGHTING

LIGHTING DESIGN
LED strip lighting to be used throughout the design. applied to the ground plane and beneath furniture and walling



EFFECT LIGHTING

Lighting for safety is achieved with the pleasant mood still evoked.
Direction and levels can be illuminated for safety throughout the public realm.

NARELLAN TOWN CENTRE - CIVIC SQUARE, HERITAGE SQUARE + STREETSCAPE HARDSCAPE PALETTE GUIDE

ACTIVITY



FLEXIBLE PROGRAMING

WATERSHEET

Water can be activity based in its simplest form. overflow from Hydraulophone will become play element while reducing microclimate on hot days.

AND

WATER FEATURE



WATER FEATURE INSPIRATION

"The creation of a social hub in the narellan town centre will be sure to make a set of unique spaces. With the incorporation of public art, water and lighting display and varios types of activity the town centre will be the place to be."



INTERACTIVE ART

LANDMARK SCULPTURE

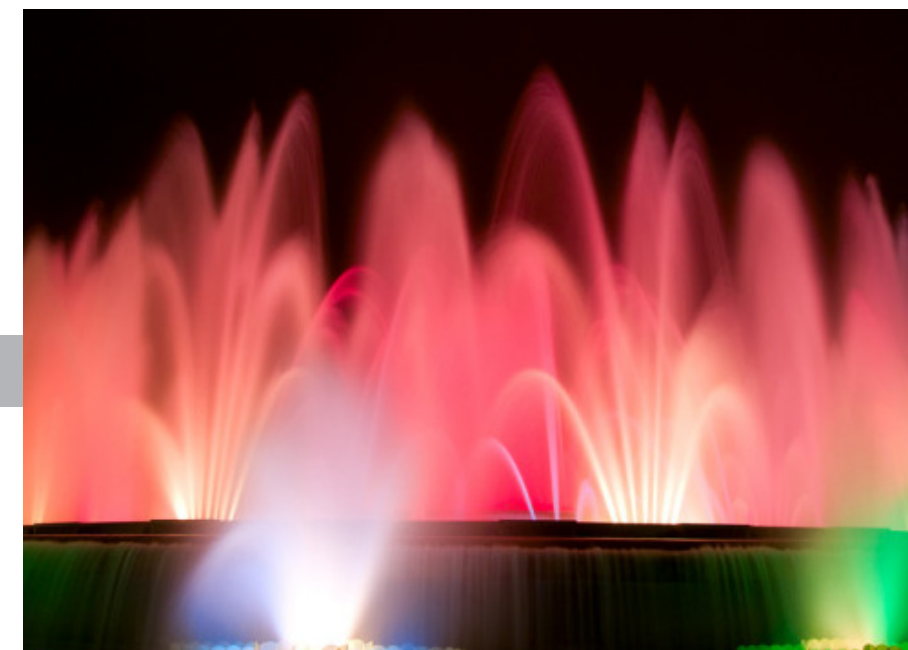
Play and sound introduced into the Civic Square through unique people attractor.



LIGHT DISPLAY

WATER FEATURE LIGHTING DISPLAY.

3D perspective corrected water projection. images to be projected on to fountain surface and surrounding groundplane of the Civic Square



LIGHT DISPLAY

A feature that will ensure activation and energy at all times- including night. This will sure to draw people to the Cafe and restaurant area

NARELLAN TOWN CENTRE - CIVIC SQUARE, HERITAGE SQUARE + STREETSCAPE SOFTSCAPE PALETTE GUIDE : TREES

ORNAMENTAL + DECIDUOUS



Lagerstroemia ind. x L. faueriei 'Zuni'



Pyrus calleryana 'Capital'



Pyrus calleryana 'Bradford'

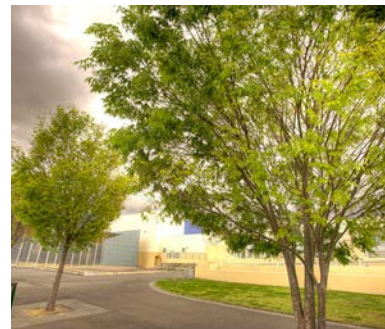


Fraxinus oxycarpa 'Raywoodii'



Michelia champaca

EVERGREEN



Zelkova serrata 'Green Vase'



Olea europaea



Cupaniopsis anacardioides



Magnolia grandiflora 'Exmouth'



Ficus macrophylla



COLOUR AND VIBRANCE CREATED THROUGH SEASONAL COLOUR

58_12 Narellan Town Centre Tree Schedule by Distinctive

Genus	Species	Hybrids/Cultivars	Common name	Pot Size	Height	Width
Cupaniopsis	anacardioides		Tuckeroo	75L	8	4
Ficus	macrophylla		Moreton Bay Fig	150L	30	15
Fraxinus	oxycarpa	raywoodii'	Claret Ash	150L	7	5
Lagerstroemia	indica	x L. faueriei 'Zuni'	Purple Crepe Myrtle	100L	4	3
Magnolia	grandiflora	Exmouth'	Exnouth Magnolia	100L	8	3
Michelia	champaca		Michelia	100L	10	5
Olea	europa		European Olive tree	75L	9	4
Pyrus	calleryana	Capital'	Ornamental Pear	75L	9	3
Pyrus	calleryana	Bradford'	Ornamental Pear	100L	9	12
Zelkova	serrata	Green Vase	Zelkova	150L	15	4

NARELLAN TOWN CENTRE - CIVIC SQUARE, HERITAGE SQUARE + STREETSCAPE SOFTSCAPE PALETTE GUIDE : SHRUBS + ACCENTS

HEDGE + SHRUB



Escallonia 'Pink pixie'



Buxus japonica



Loropetalum chinese rubrum



Viburnum odoratissimum



Murraya paniculata

58_12 Narellan Town Centre Shrubs Schedule by Distinctive

Genus	Species	Hybrids/Cultivars	Common name	Pot Size	Height	Width
Acmena	smithii	Allyn Magic'	Dwarf Lilly Pilly	200mm	1	1
Buxus	japonica		Japanese Box	200mm	2	2
Escallonia	macrantha	Pink pixie'	Pink Pixie	200mm	0.8	0.8
Loropetalum	chinense	rubrum	Std Red Loropetalum	200mm	1.5	1.5
Murraya	paniculata		Orange Jessamine	200mm	3	3
Raphiolepis	indica		Indian Hawthorn	200mm	1.5	1.5
Raphiolepis	umbellata	Minor'	Dwarf Indian Hawthorn	200mm	1	1
Viburnum	odoratissimum		Sweet Viburnum	300mm	4.5	2

58_12 Narellan Town Centre Accents Schedule by Distinctive

Genus	Species	Hybrids/Cultivars	Common name	Pot Size	Height	Width
Beschorneria	yuccoides	Variegata'	Mexican Lily	200mm	0.5	1.2
Colocasia	esculenta	Black Magic'	Taro	200mm	1.5	1
Dracaena	draco	Canary Island Dragon tree	Dragon's - Blood Tree	75L	3	6
Ophiopogon	intermedians	Stripey White'	Liriope Stripey White	200mm	0.3	0.3
Agave	attenuata		Agave	200mm	0.5	0.5
Doryanthes	excelsa		Gynea Lilly	25L	1.5	1.5

HEDGE + SHRUB



Raphiolepis indica



Raphiolepis umbellata 'minor'

ACCENT



Colocasia esculenta 'Black Magic'



Dracaena draco



Beschorneria yuccoides



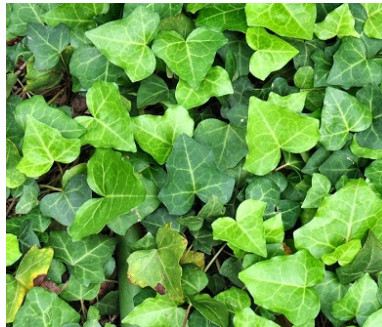
Ophiopogon Intermedians



Doryanthes excelsa

NARELLAN TOWN CENTRE - CIVIC SQUARE, HERITAGE SQUARE + STREETSCAPE SOFTSCAPE PALETTE GUIDE : GRASSES + GROUNDCOVERS

GROUNDCOVERS



Hedera canariensis



Hibbertia pendunculata



Philodendron 'Xanadu'



GRASSES



Dianella 'Cassa Blue'



Dianella 'Border Silver'



INDICATIVE IMAGE



INDICATIVE IMAGE

LANDSCAPE DETERMINES SPACES + CREATES OUTDOOR ROOMS

58_12 Narellan Town Centre Groundcover Schedule by Distinctive

Genus	Species	Hybrids/Cultivars	Common name	Pot Size	Height	Width
Hedra	canariensis		Canary Island Ivy	200mm	0.3	1.5
Hibbertia	pedunculata		Guinea Flower	140mm	0.3	0.6
Philodendron		'Xanadu'	Xanadu	200mm	0.8	0.8

58_12 Narellan Town Centre Grasses Schedule by Distinctive

Genus	Species	Hybrids/Cultivars	Common name	Pot Size	Height	Width
Dianella	caerulea	'Cassa Blue'	Flax lily	140mm	0.6	0.5
Dianella	caerulea	'Border Silver'	Dianella border silver	140mm	0.6	0.5

DIFFERENT HEIGHTS CREATE VERSITILE AND DYNAMIC SPACES

NARELLAN TOWN CENTRE - CIVIC SQUARE, HERITAGE SQUARE + STREETScape CONCEPT PUBLIC ART STRATEGY



CONVERGENCE OF **OLD + NEW**

PUBLIC ART will compliment the sensitive and imaginative approach of the design concept. It will be about reconnecting the natural and industrial past of the site while looking to the future at what makes Narellan a great and a memorable place to live.



URBAN MARKERS



ARBOUR STRUCTURE



SIGNAGE

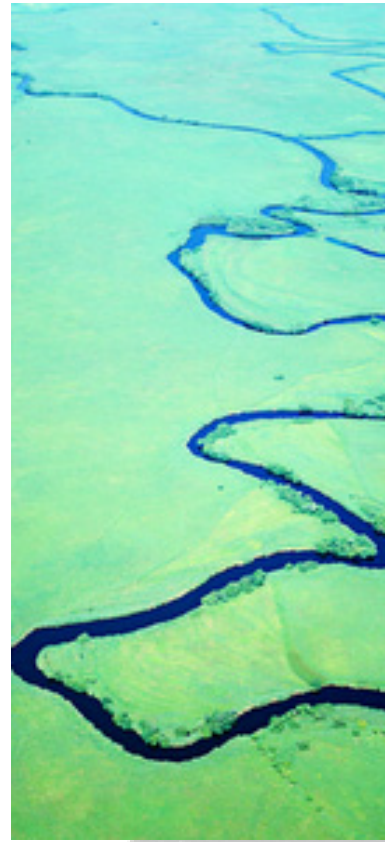


URBAN MARKERS

"Sculptural elements reflect nature"

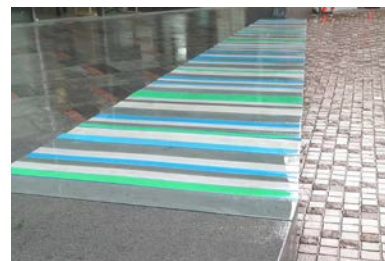
CONTRAST BETWEEN **NATURAL + ABSTRACT**

NARELLAN TOWN CENTRE - CIVIC SQUARE, HERITAGE SQUARE + STREETSCAPE CONCEPT PUBLIC ART STRATEGY



BRINGING HISTORY **TO LIFE**

MOVEMENT plays a big part in the design concept of the new Narellan town centre. Various forms of public art can play on this theme through bold colours inlaid into the ground plane, large format imagery and placement of modern unique street art.



INLANDSCAPE STRUCTURES



IN PAVEMENT BANDING



IN WORDING INLAIS



IN STREET ART

Public art can communicate movement; through the space, through the history of the place and through time.

BOLD VIBRANT DYNAMIC

NARELLAN CIVIC PRECINCT 2012

CONCEPT PUBLIC ART STRATEGY

ELYARD STREET

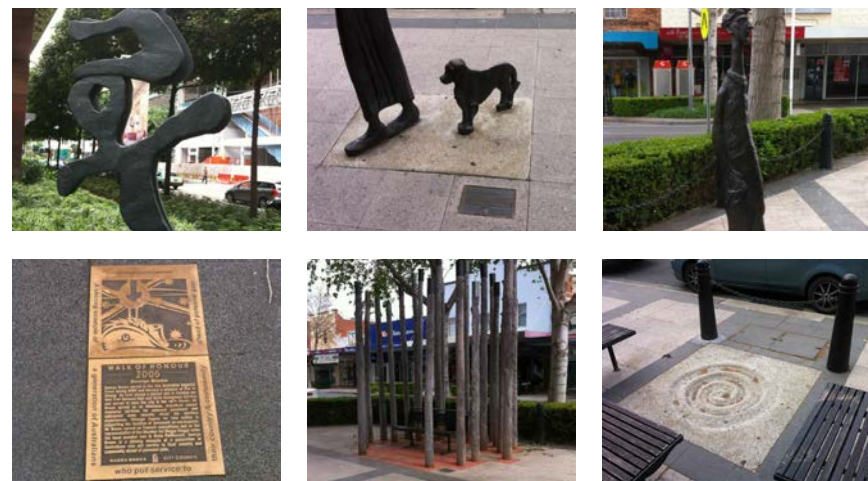
'People and Place Makers' – Narellan Heroes

Referencing the past + the present

Elyard Street as the new main street is intended to provide a number of spaces for community activity. A performance amphitheatre, a civic square, interactive play equipment experiences and the embellishment of public art along the main street all combine to create a sense of urban place and business space.

The local heroes theme of 'people and place maker's is an opportunity to tell the story of the people behind Narellan. This includes the local Aboriginal connections, the first explorers, the community leaders, celebrities and identities that have all played a role in shaping Narellan. It is also therefore a chance to tell the story of Narellan through a series of key people and events and their personal relationship to the local area.

This form of public art is proposed as a consistent style of streetscape sculpture with information plaques documenting and explaining the who, what, when, where and why of each person. In this way, Elyard Street anchors itself as the centre of the community and the centre of the people that shaped the community.



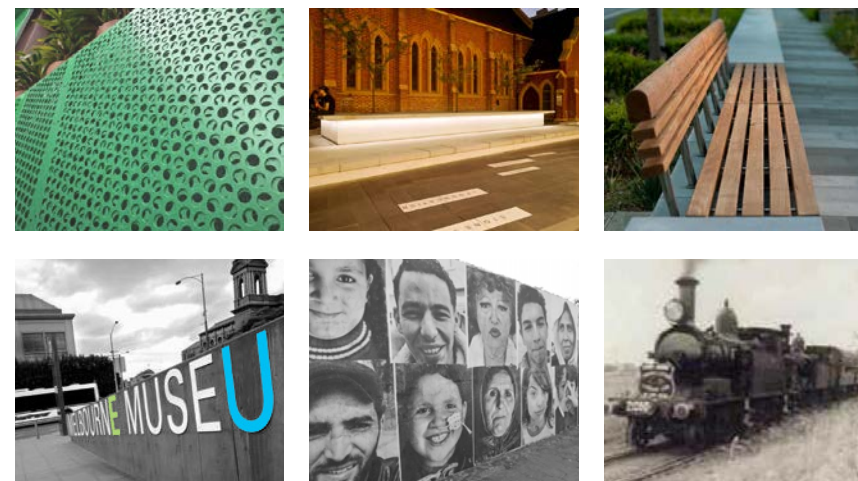
HERITAGE SQUARE

'The History' – A Timeline of Narellan

Referencing the past

The heritage Square area of the proposed Narellan Town Centre Development is the opportunity to reference heritage architecture and its interrelationship with contemporary design. The mix of materials and juxtaposition of buildings is a perfect place to tell the lineage and timeline of the town.

The forms of public art in this space are proposed to be a series of information panels in traditional and contemporary forms that document chronologically the history. Wall panels also provide some visual focus of images of the past.



NARELLAN CIVIC SQUARE

Rhythm and Movement

Referencing the past + the present + the future

The Civic Square area of the expanded form of Narellan Town Centre focuses on being an interactive and contemporary vision of the past, present and future of Narellan. The concept of 'Rhythm and Movement' comes from two key areas – the historical significance of the railway for Narellan and location of the site as the former railway station; and; the current rhythm festival that identifies an cultural sense of place for Narellan in its current form.

The theme is interpreted in art forms through sculptural, the sound of running water, lighting and the creation of perpetual sense of movement and flow within the space. The industrial history of Narellan alongside the open green spaces of the Cowpastures can all be interpretatively acknowledged and celebrated within the civic space.

